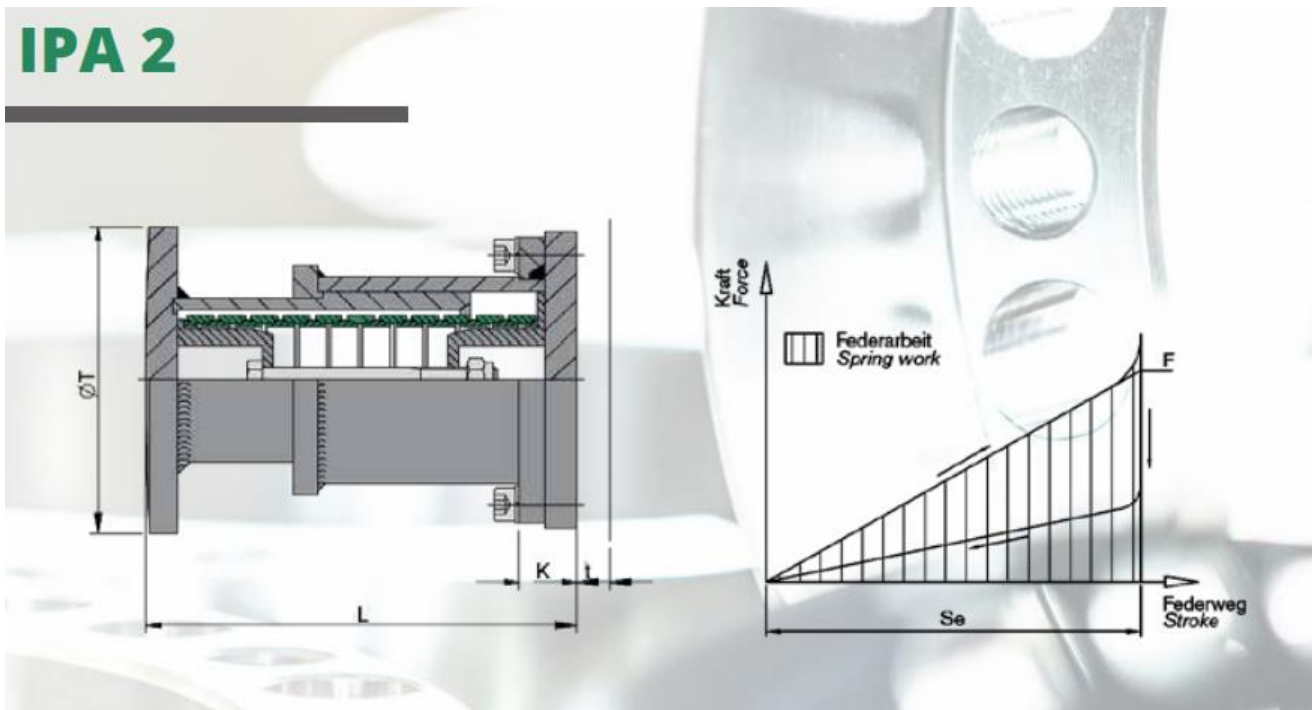
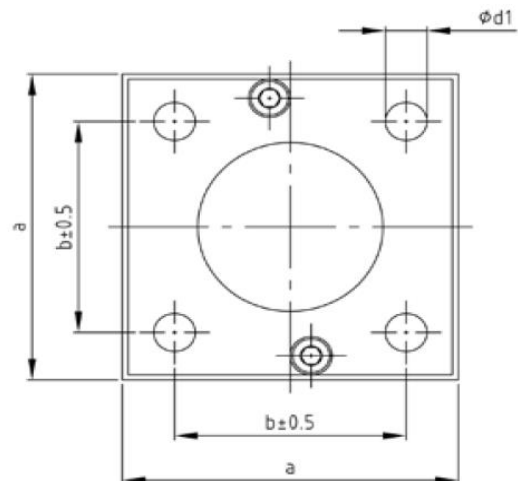


# IPA 2



## Used symbols (使用される記号)

m	[kg]	Weight (質量)
Fv	[kN]	Pretensioning force (初期圧縮力)
F	[kN]	Spring force (バネと見たときの静的反力)
s	[mm]	Spring travel (1エレメントのバネ変位置)
W	[J]	Spring work (エネルギー吸収量)
L	[mm]	Total length (全長)
T	[mm]	Baffle diameter (緩衝筒頭部金具径)
K	[mm]	Flange thickness (フランジの厚さ)
a	[mm]	Flange dimension (取付角部寸法)
b	[mm]	Hole size (取付穴ピッチ)
d1	[mm]	Flange boring (取付穴径)
t	[mm]	Support wall thickness (取付相手先の厚み)



Order specification:

IPA2-Sz-Type.Index

(e.g.: IPA2-1-06300.xxxx\*)

\*Sequential number:

includes references to further product data

《寸法性能表》

Diagram values						Dimensions of the buffer				Connection dimensions			
Sz.	Type	Fv	F	S	W	L	T	K	a	b	d1	t	m
		kN	kN	mm	J	mm	mm	mm	mm	mm	mm	mm	Kg
1	06300	6	55	27.4	830	202	150	27	145	100	18	15	12
2		6	55	37	1120	262	150	27	145	100	18	15	13.8
3		6	55	54.8	1670	374	150	27	145	100	18	15	18.2
4		6	55	64.4	1960	434	150	27	145	100	18	15	20.8
5		6	55	74	2250	494	150	27	145	100	18	15	21.5
6	08000	7	84	33	1500	230	200	27	160	110	18	15	16.3
7		7	84	46	2090	306	200	27	160	110	18	15	19.5
8		7	84	66	3000	428	200	27	160	110	18	15	25.5
9		7	84	79	3590	505	200	27	160	110	18	15	29.6
10		7	84	92	4180	582	200	27	160	110	18	15	31
11	10000	10	125	44	2970	300	250	31	185	130	23	20	30
12		10	125	60.5	4080	397	250	31	185	130	23	20	30.5
13		10	125	89	6000	571	250	31	185	130	23	20	38.2
14		10	125	105	7080	667	250	31	185	130	23	20	44.8
15		10	125	121	8160	763	250	31	185	130	23	20	52.1
16	12400	20	200	51.2	5630	365	250	34	215	155	23	20	45
17		20	200	64.8	7120	454	250	34	215	155	23	20	48
18		20	200	102.4	11260	696	250	34	215	155	23	20	66
19		20	200	116	12760	784	250	34	215	155	23	20	77
20		20	200	130	14300	872	250	34	215	155	23	20	79
21	16600	20	360	75	14250	500	250	47	270	200	27	25	101
22		20	360	95	18050	630	250	47	270	200	27	25	126
23		20	360	142	26980	880	250	47	270	200	27	25	149
24		20	360	170	32300	1040	250	47	270	200	27	25	152
25		20	360	190	36100	1200	250	47	270	200	27	25	177